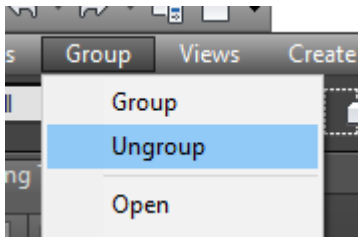
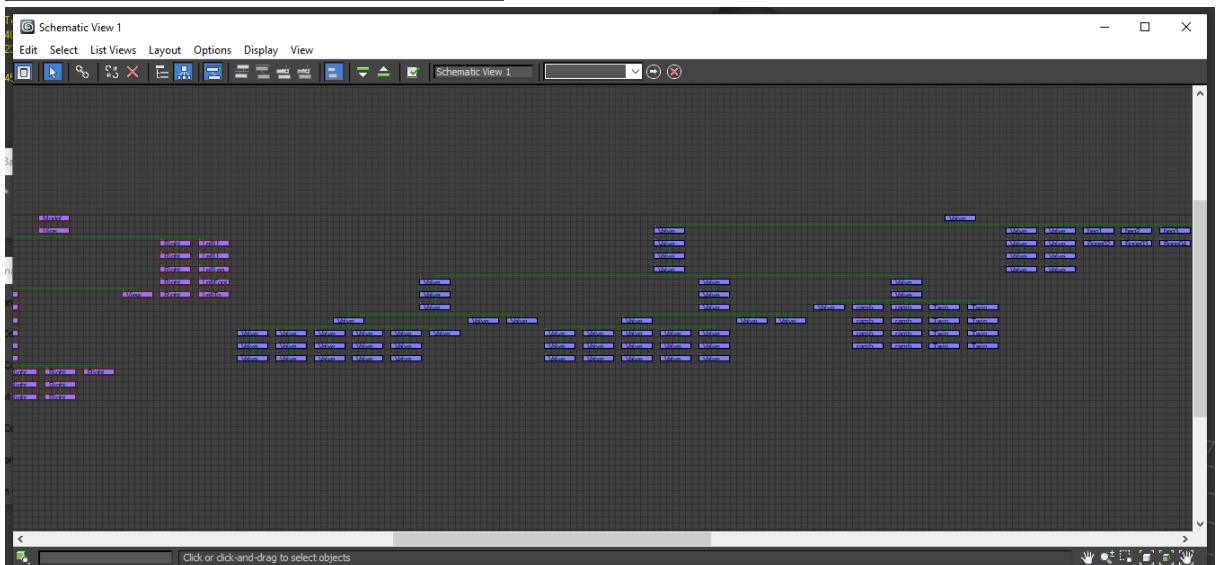
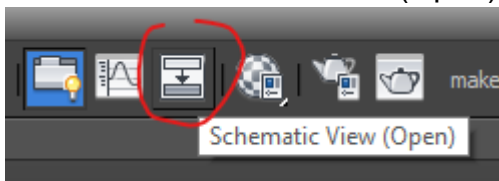


MERGING INTO ONE MESH

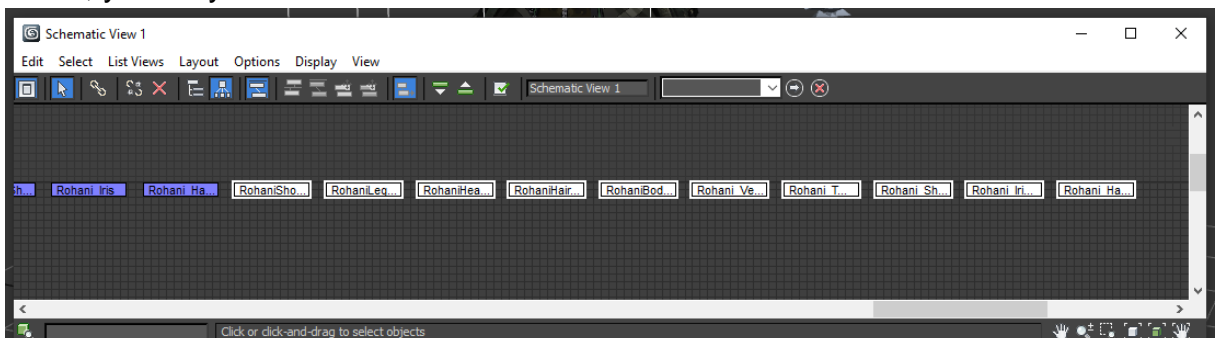
1. Now time to merge all meshes into single one mesh, you may ungroup your model



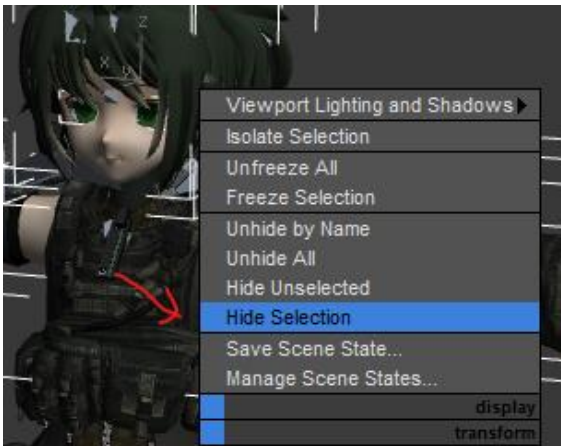
2. Before merging, we need to hide the cloned backup mesh. In order to do it, select the “Schematic View (Open)” button.



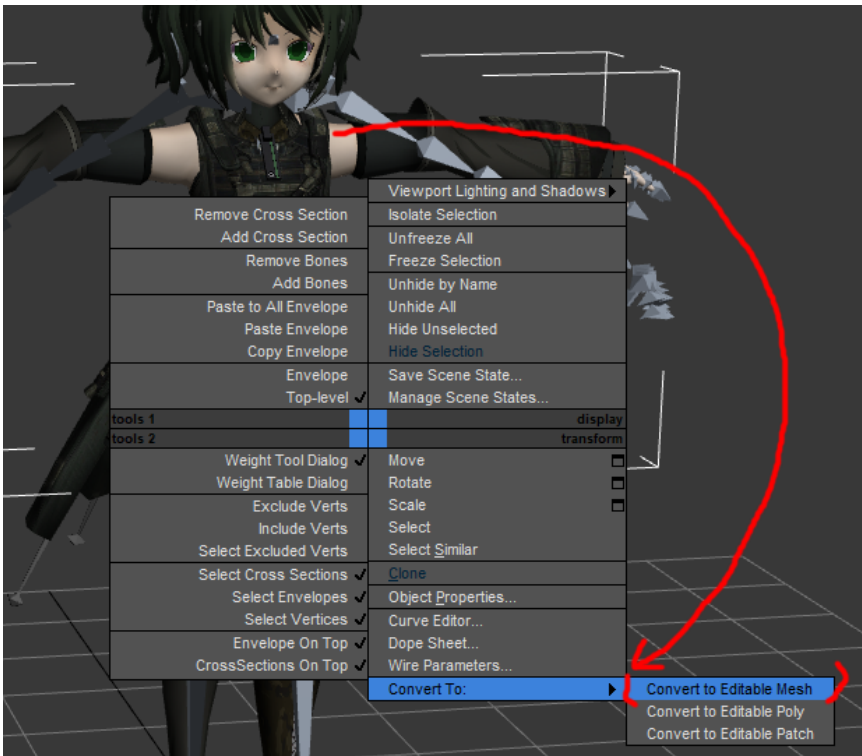
3. Select only cloned object. Usually they got suffix of “001” at the end of mesh name, you may need to zoom and look for it



4. After that close the schematic view windows and right click at selected mesh, then hide it.

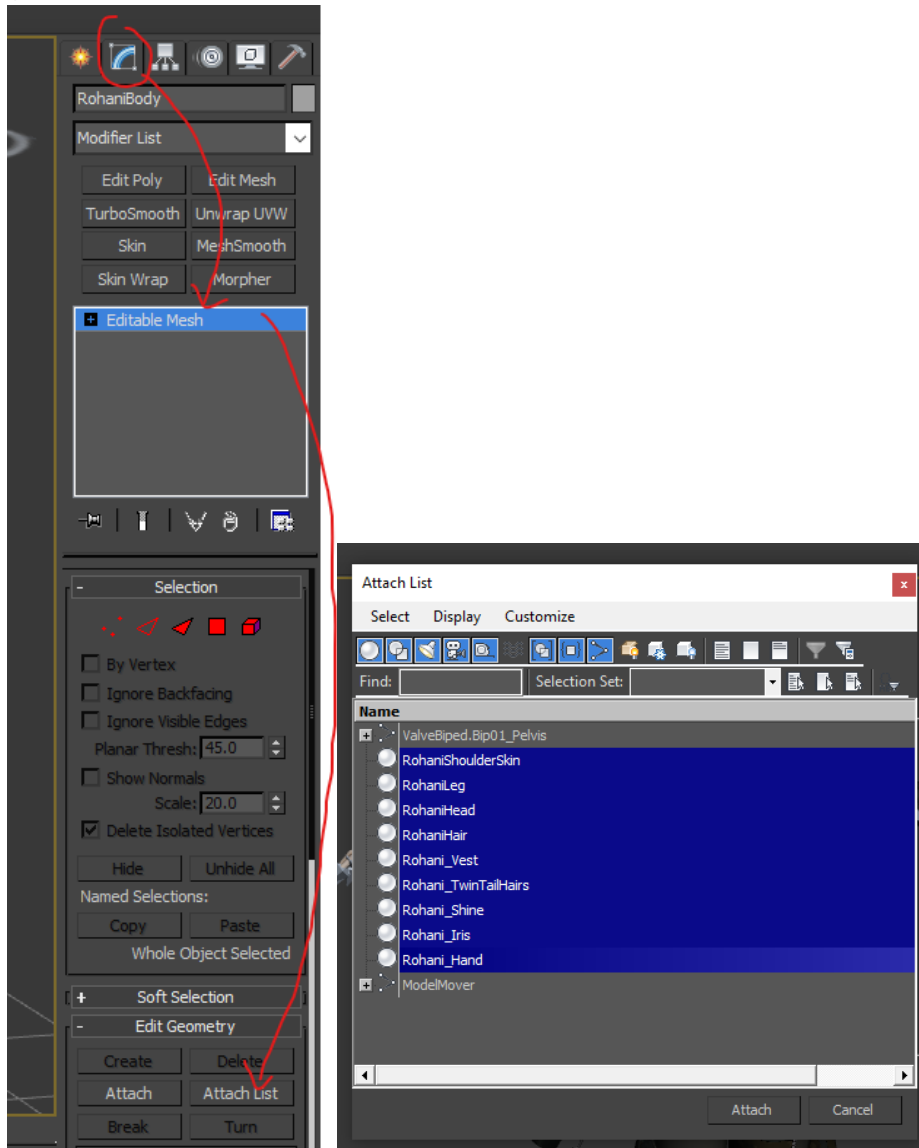


5. Ok its time to merge the model into single one mesh; select any one of the mesh, then right click on it, then Convert To: Editable Mesh

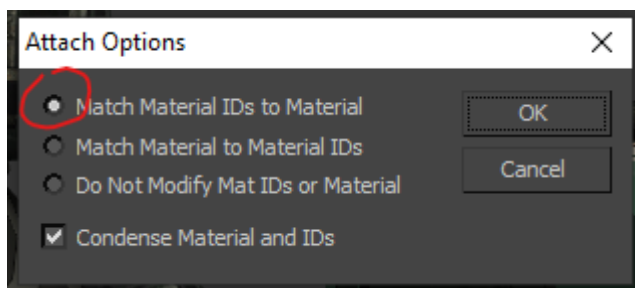


6. Select on modify tab (the one with rainbow icon), Select at Editable Mesh then “Attach list” to attach all mesh. Select all meshes but don’t select bones. Mesh

got sphere icons on its side.



7. If merge materials Attach Options windows appear, Select top "Match Material IDs to Material" then OK



8. Rename your merged model properly!

